

GEOLOGIC MAP

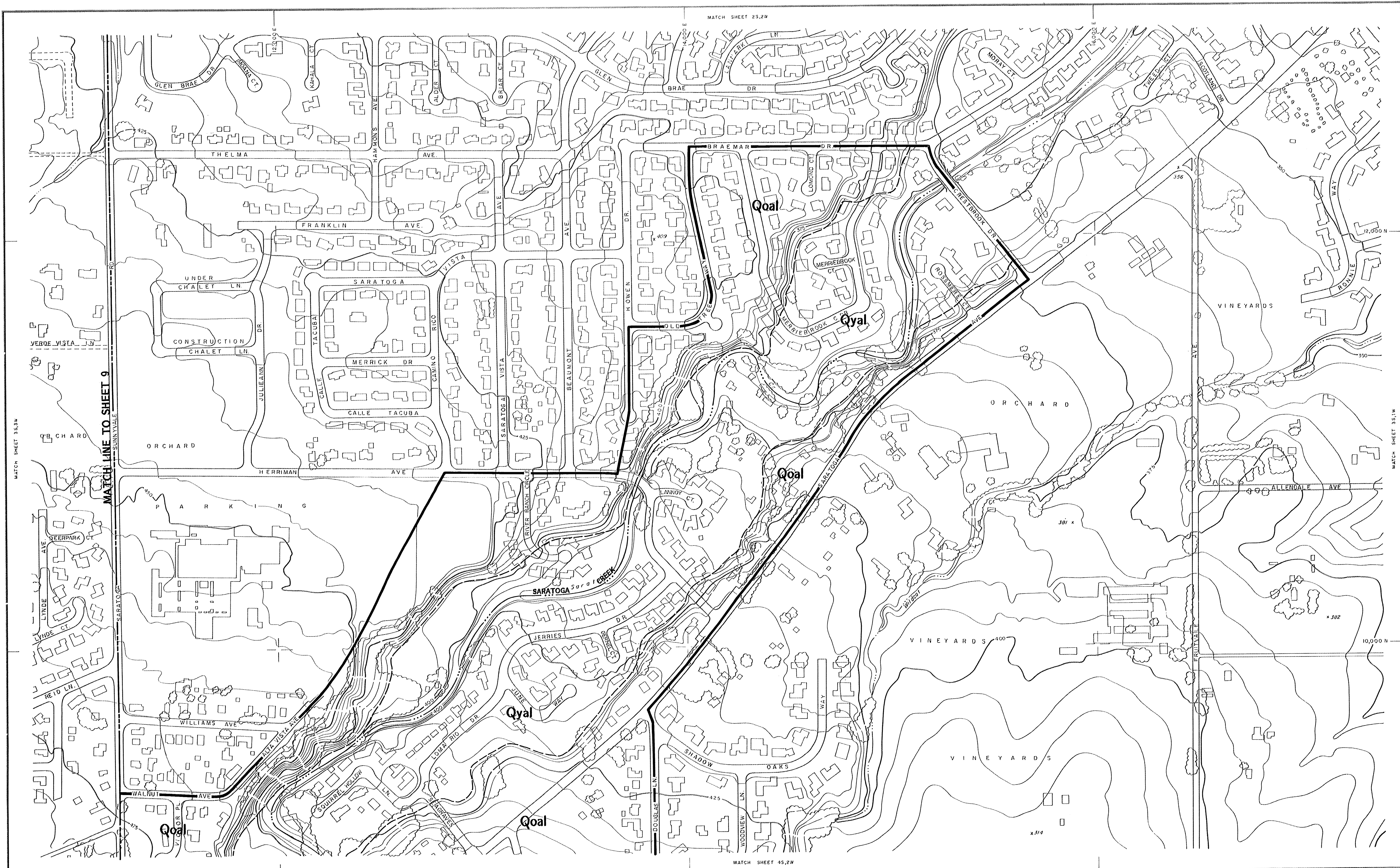
GEOLOGIC MAP 15
OF THE
LOWER SARATOGA HILLSIDE AREA
SARATOGA, CALIFORNIA

SHEET
15

PROJECT
3595



REVISIONS				
NO.	DATE	DWN	CHKD	APPR

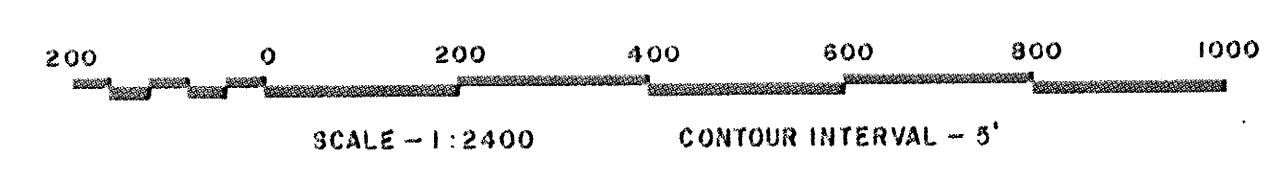


Prepared by Stereophotogrammetric Methods
by ARCAD ENGINEERS, INC, Consulting Civil Engineers
144 Kennedy Ave.
Campbell, Calif.

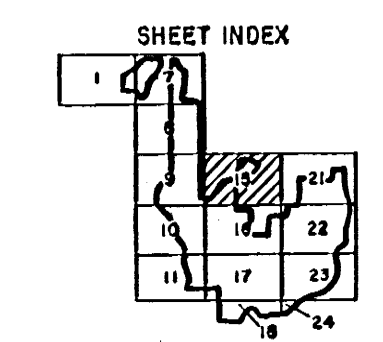
Control by
FRANK PISANO & ASSOCIATES, Civil Engineers
333 North 28th St
San Jose, Calif.

Date of Photography, February 12, 1964

* - GR-D NORTH



HORIZONTAL DATUM - Assumed
VERTICAL DATUM - U.S.C. & G.S. Mean Sea Level (1954 Adjustment)



CITY OF SARATOGA
SANTA CLARA COUNTY CALIFORNIA
MAP SHEET 15 SHEET 35,2W